

IdentiGEN

DNA TraceBack® Technical Specification Instruction

IDTECH-001e

Carcass Sampling Beef

Scope

To describe the procedure for the securing, checking and dispatch of carcass samples.

Responsibility

Beef processor appointed operative responsible for carcass sampling.

Training is provided by IdentiGEN.

Consumables

IdentiGEN DNA TraceBack® Sampling Kit

Instructions:

Linking DNA sample with carcass ID

When a carcass number appears on screen at the hot-scales, scan the barcode on the IdentiGEN DNA TraceBack® sampling device into the system. This will associate the IdentiGEN sample ID with the carcass ID (ear tag number).

The data field used for capture of the IdentiGEN barcode should have the following rules:

- Field must not be empty, blanks are not permitted
- Field value must be unique, i.e. duplicates are not permitted.
- Value must be a 9-digit numeric value only.

DNA carcass sampling instruction

- 1) A single sample must be secured from every carcass slaughtered for the programme.
- 2) Samples must be taken using the IdentiGEN DNA TraceBack® sampling device.
- 3) Remove the lid from the sampling device to expose the scraping surface.
- 4) Scrape the relevant carcass with the device on a **red meat** cut surface to secure a small meat sample (the size of a grain of rice). See Figure 1 (below).
- 5) Fat and Blood must be avoided. (See Figure 2).

DNA TraceBack® Technical Specification Instruction

IDTECH-001e

Carcass Sampling Beef

- 6) Replace the lid on the sampling device with a CLICK.
- 7) Place the sampling device into the bag provided and complete the information on the label of the bag
- 8) At the end of each slaughter day, the samples are collected and stored in the freezer. Ensure all information is completed on the label and that the bag is properly sealed.
- 9) Check the kill sheet to confirm that all eligible carcasses slaughtered that day, have been associated with the barcode of a DNA sampling device. In case of missing DNA samples, sample the carcass retrospectively where possible.
- 10) The carcass samples must be stored in a freezer at -20°C until they are shipped to IdentiGEN. Samples are shipped weekly on the following Monday. Samples can be sent under ambient conditions provided it is with guaranteed next day delivery.

IdentiGEN

DNA TraceBack® Technical Specification Instruction

IDTECH-001e

Carcass Sampling Beef

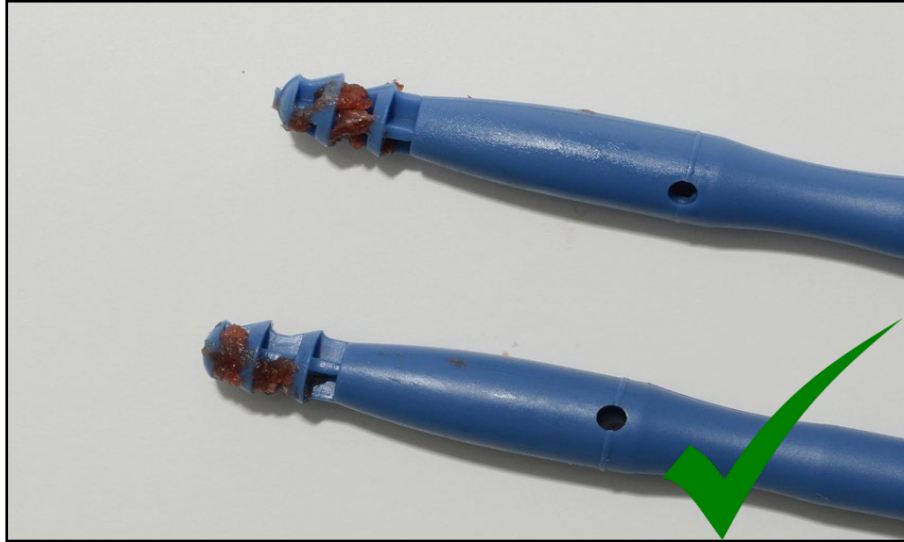


Figure 1. Red meat sample

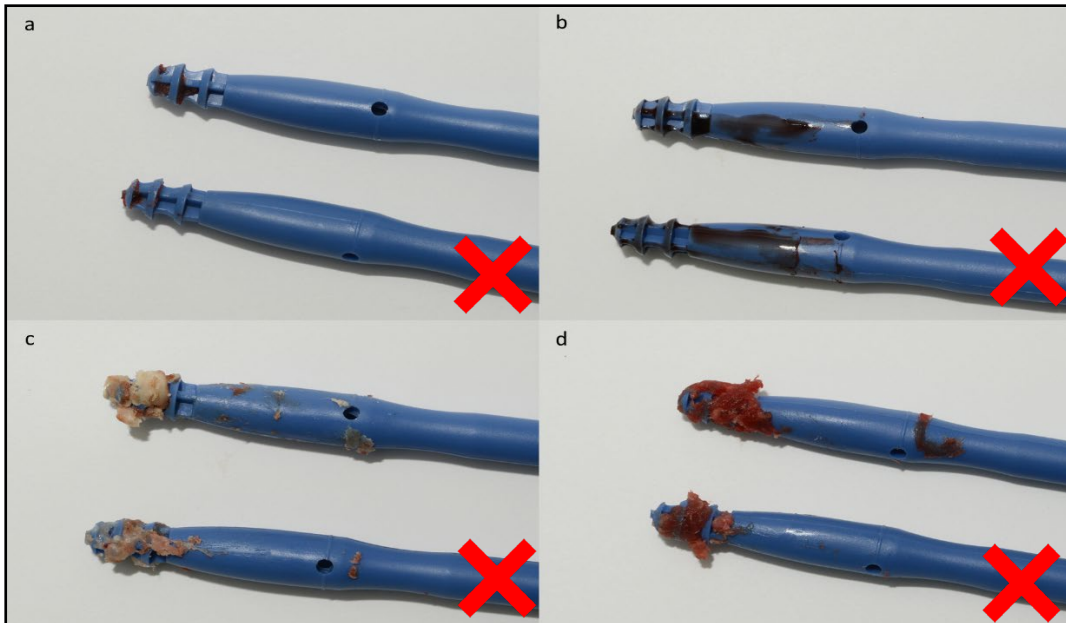


Figure 2. Example of unsuitable samples (a) insufficient red meat sample, (b) bloody sample, (c) fatty sample, (d) excessive red meat sample.